

PLANNING COMMITTEE - WEDNESDAY, 15TH DECEMBER, 2021

SUPPLEMENTARY PAPERS

The following Papers were tabled at the meeting.

<u>AGENDA ITEM</u>	<u>REPORT TITLE</u>	<u>PAGE</u>	<u>WARD</u>
5.	P/19650/000 - 183-187 Liverpool Road, Slough Trading Estate, Slough <i>Presentation Slides</i>	1 - 24	Farnham
6.	P/19443/000 - 30-32, Wexham Road, Slough, SL1 1UA <i>Presentation Slides</i>	25 - 46	Central

This page is intentionally left blank

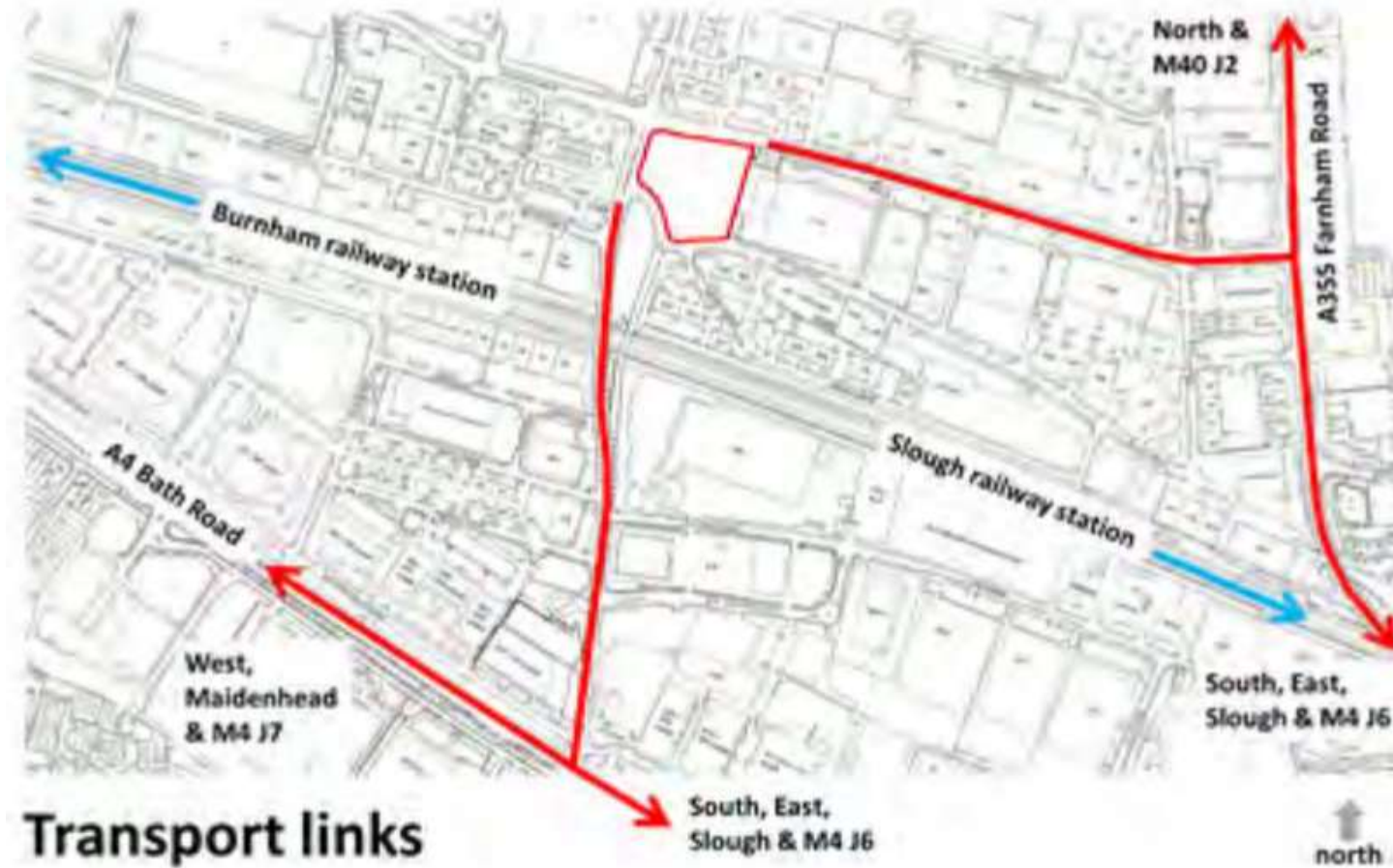
183-187 Liverpool Road

P/19650/000

Site Location Plan



Site Location Plan



Aerial Photograph of Site



Aerial Photograph of Site



View of site from Buckingham Ave



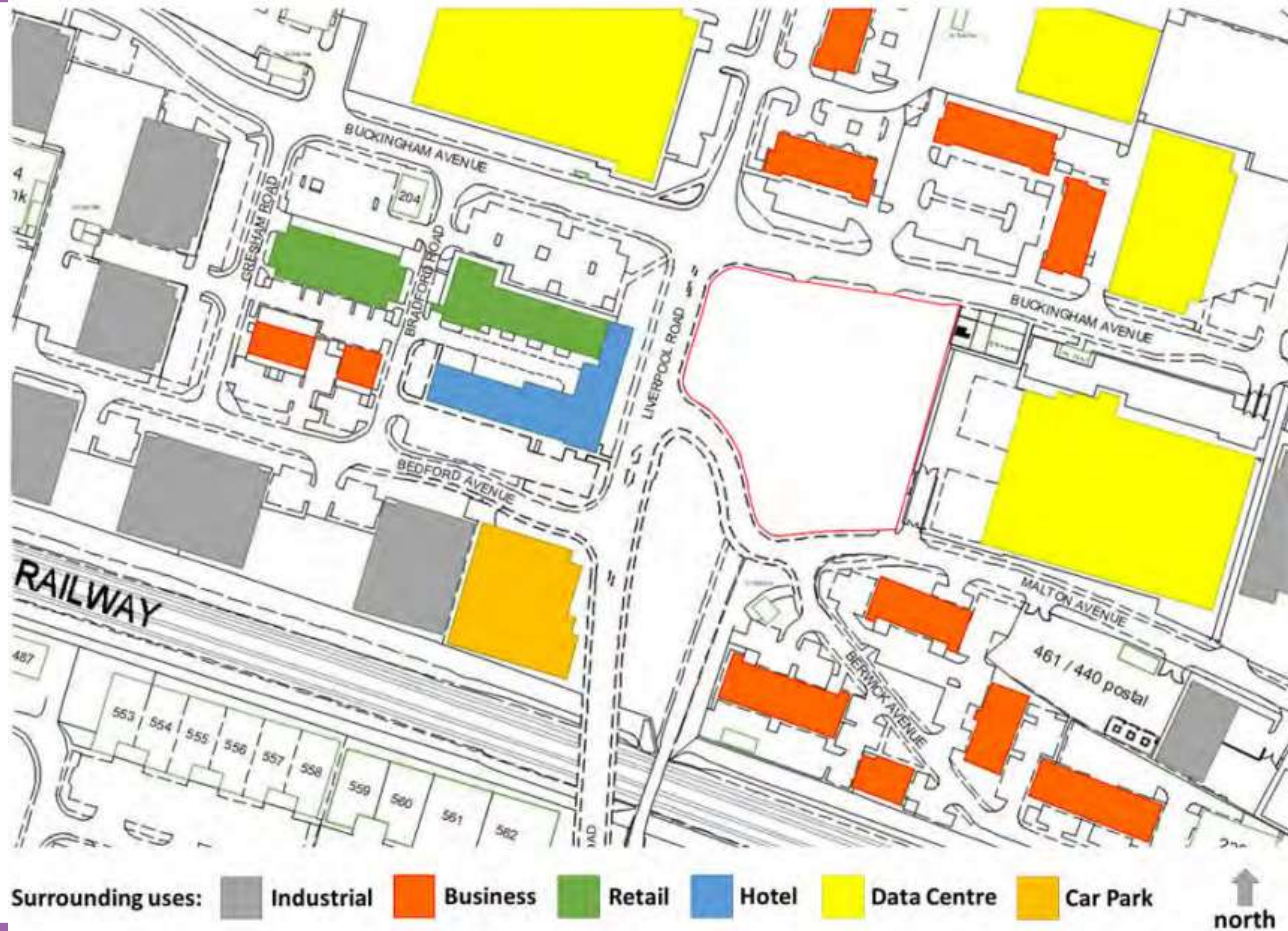
View of site from Leigh Road Park



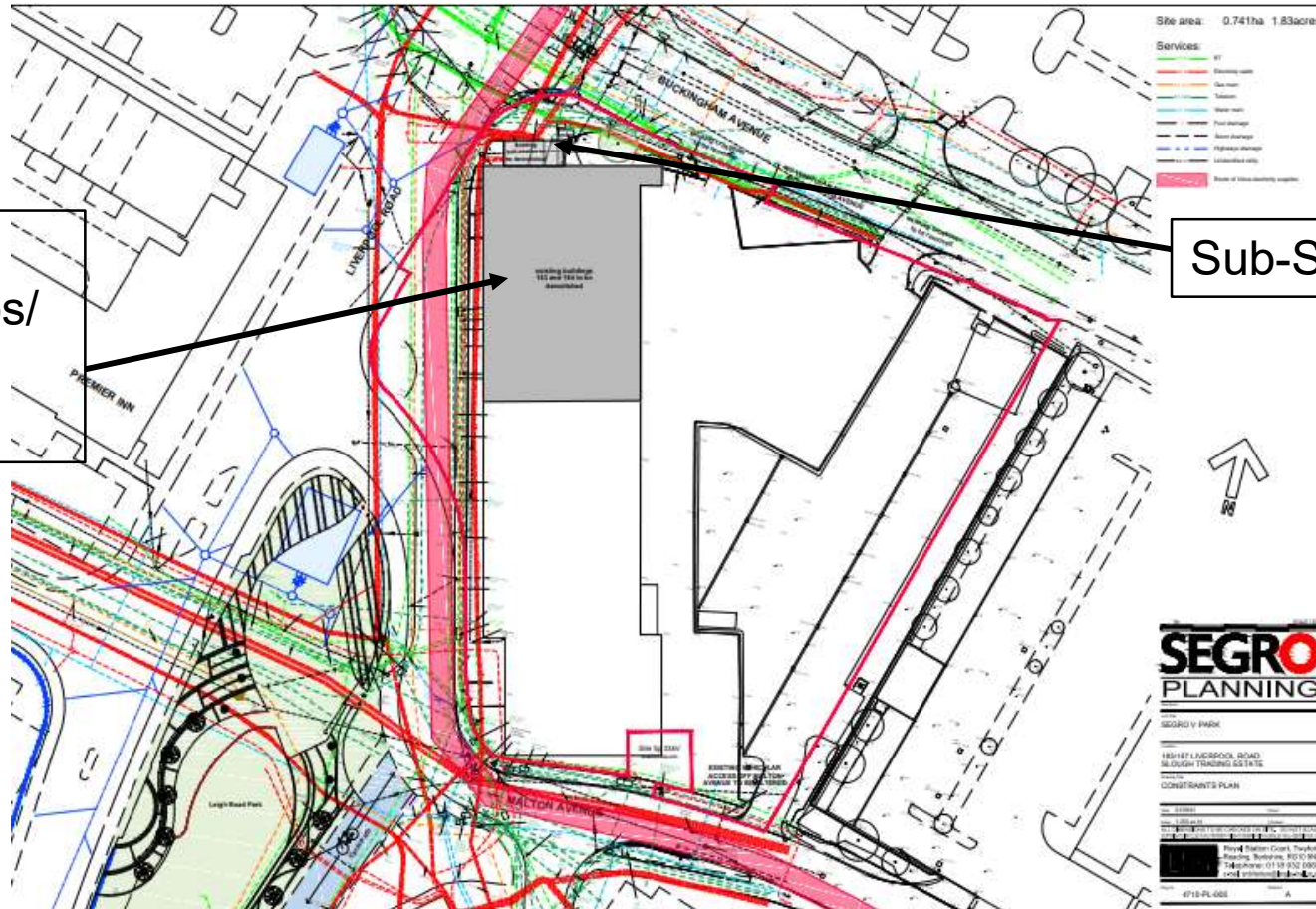
View of site from Liverpool Rd



Land Uses



Infrastructure & Constraints



The Development

Full planning application for the construction of a 7-storey building for a café (Class E (b)), office (Class E (g) (i)), light industrial (Class E (g) (iii)), general industrial (Class B2) and storage and distribution (Class B8) uses with ancillary office floorspace, means of access, servicing and loading facilities, car and cycle parking facilities, substation, drainage, public realm and landscaping, boundary treatments and other ancillary works.



The Development



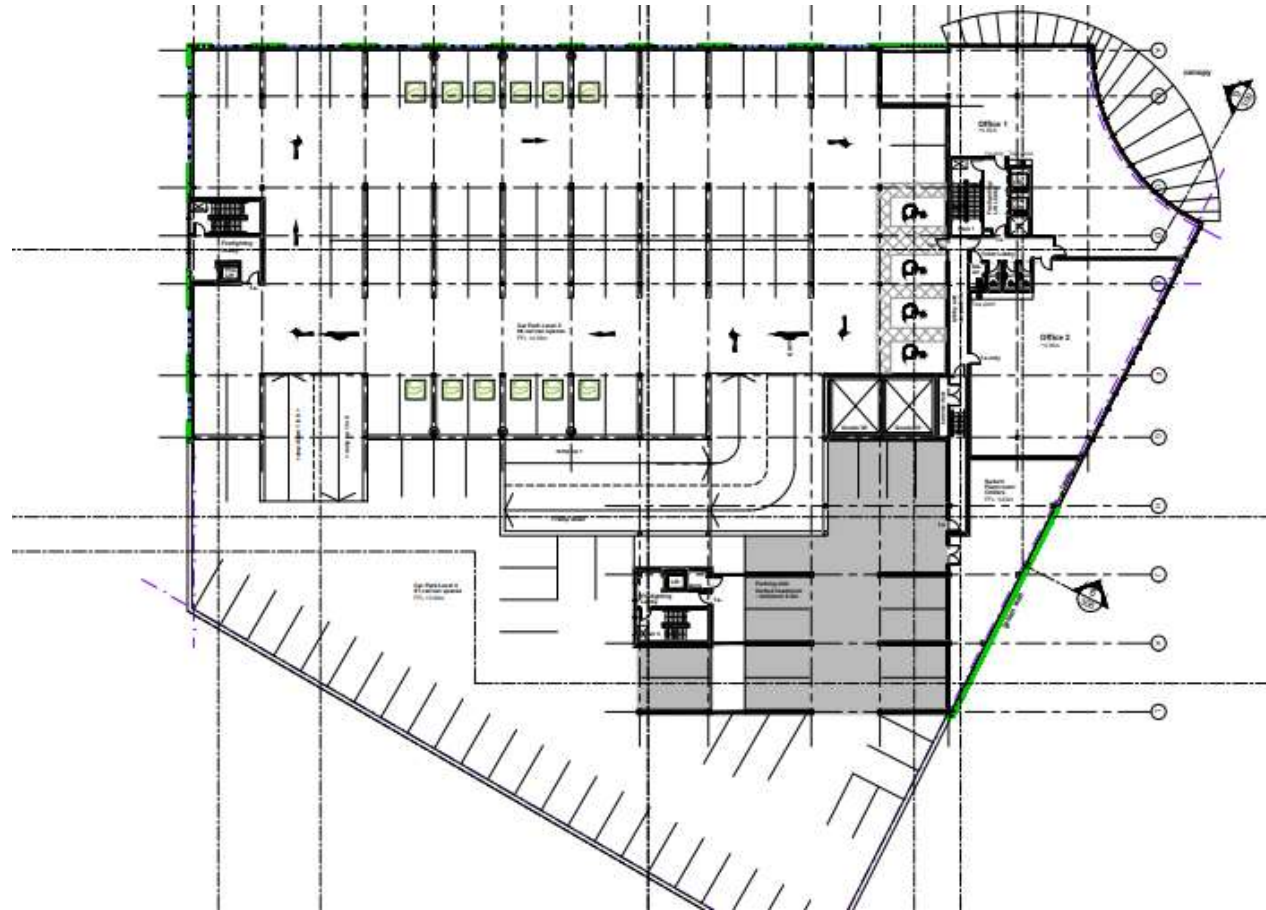
Proposed Site Plan



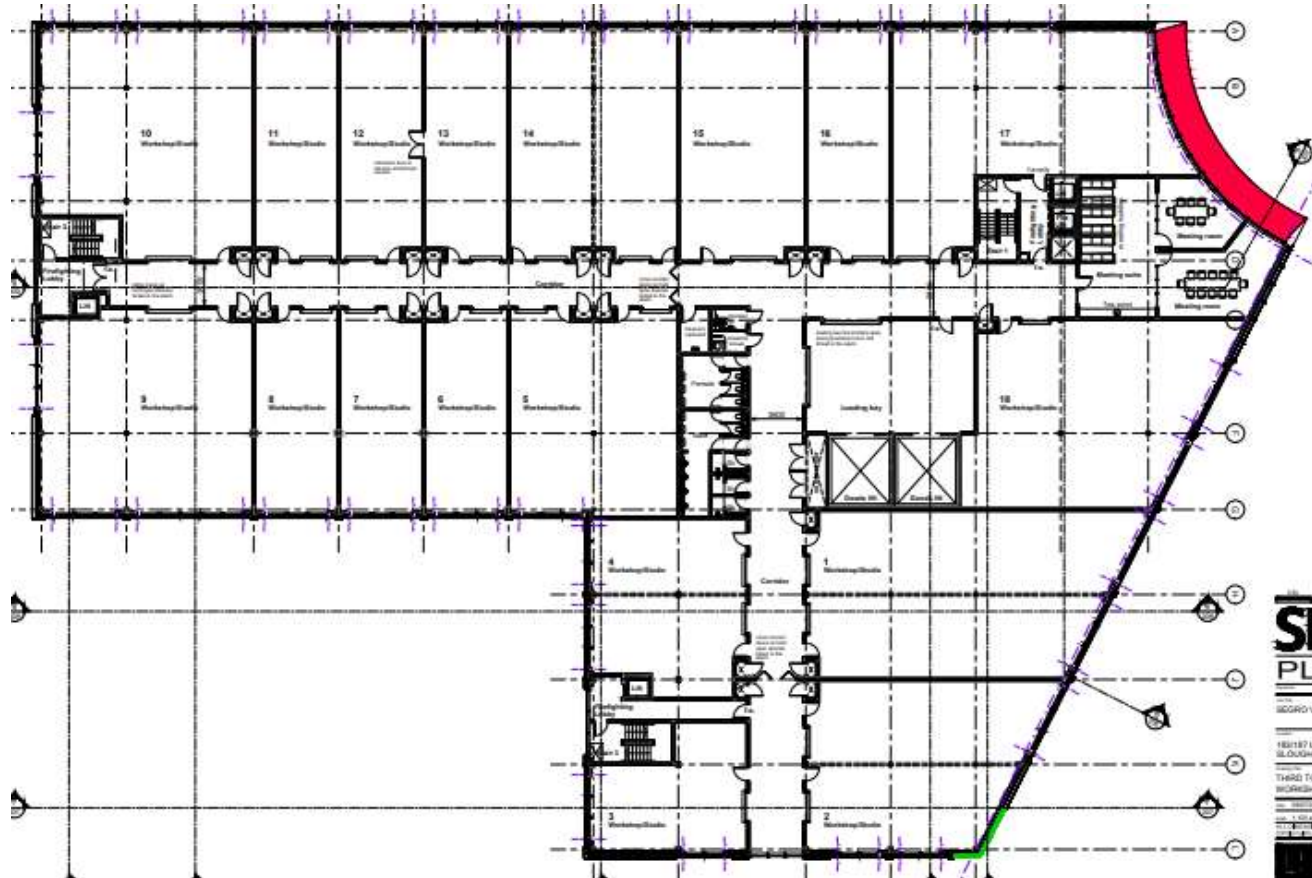
Ground Floor Plan



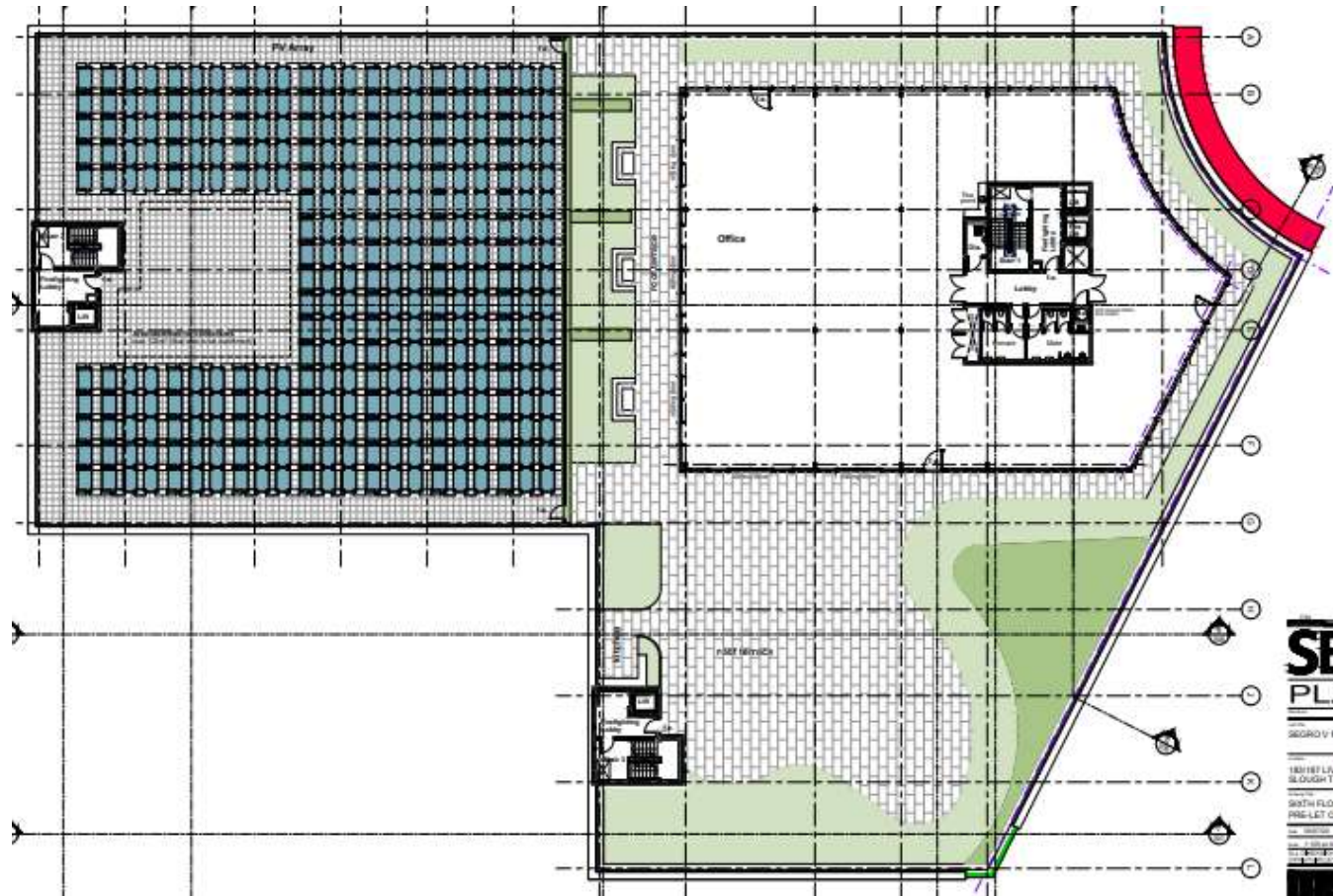
First Floor Plan (Offices) + Car Park



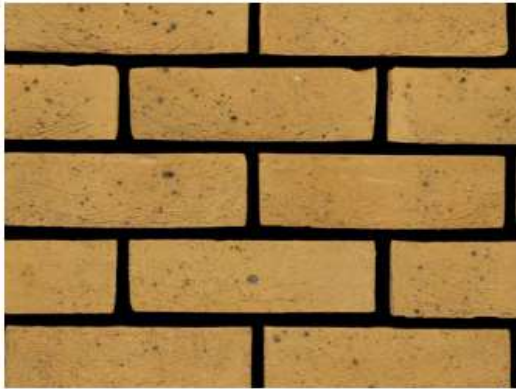
Levels 3-5 – Workshop Units



6th Floor Plan (Offices + Roof Terrace + PVs)



Materials + Design



Facing brickwork: London Yellow Multi Stock brick



Faceted curtain walling to main entrance



Overhang and curtain walling

Curtain walling to entrance façade will be faceted. Radius of façade is 16.5m. Angle between adjacent mullions is 5°. If glazing was curved, the centre of each glazed panel would only be offset by 17mm from its edge.



Structural glass balustrade, roof paving and planters



Roof terrace: Structural glass balustrade with stainless steel handrail
Porcelain paving tiles



Sedum roof



Green wall

Materials + Design



Car park hit-and-miss glass panels and green wall
(to match Bedford Avenue carpark)
Glass panels: Profilit glass



Glass canopy



Trespa panels: Urban Grey



Louvre blade system

4.5.2 Palette of colours used in the façades of the building:



Curtain walling: RAL7016 Anthracite

Overhang: RAL9006 Silver metallic

Fascia: RAL 3020 Signal Red

Bris-soleil: RAL1011 Brown Beige

CGIs (Eastern View from Buckingham Ave)



View Looking South along Liverpool Road



View from Leigh Road Park



End



This page is intentionally left blank

30-32 Wexham Road,
Slough, SL1 1UA

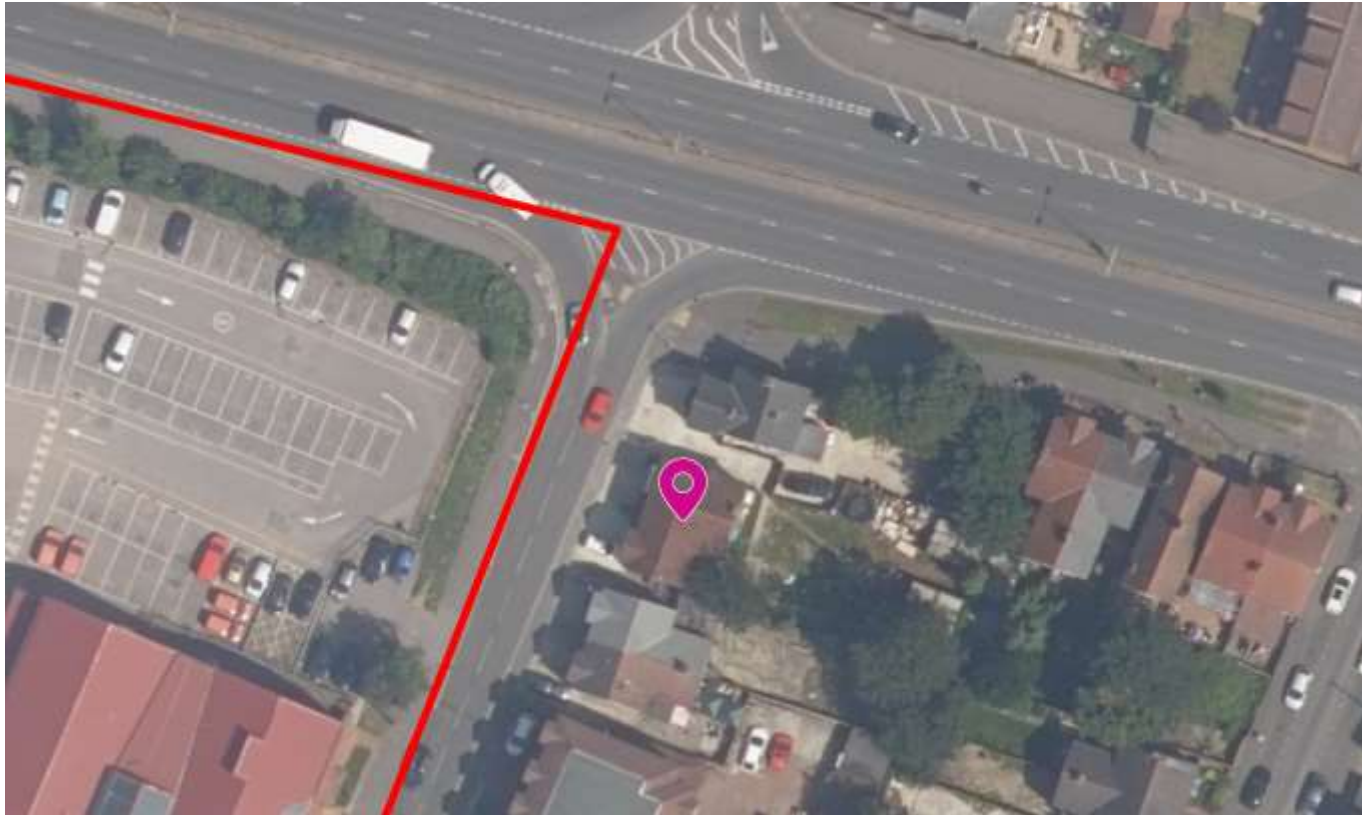
Ref: P/19443/000

2 - Site location



① Location Plan
1:1250

3 - Aerial context



4 – Street view of site (looking from east)



5 - View of the rear of properties



6 - View of land opposite



7 - View south towards High Street



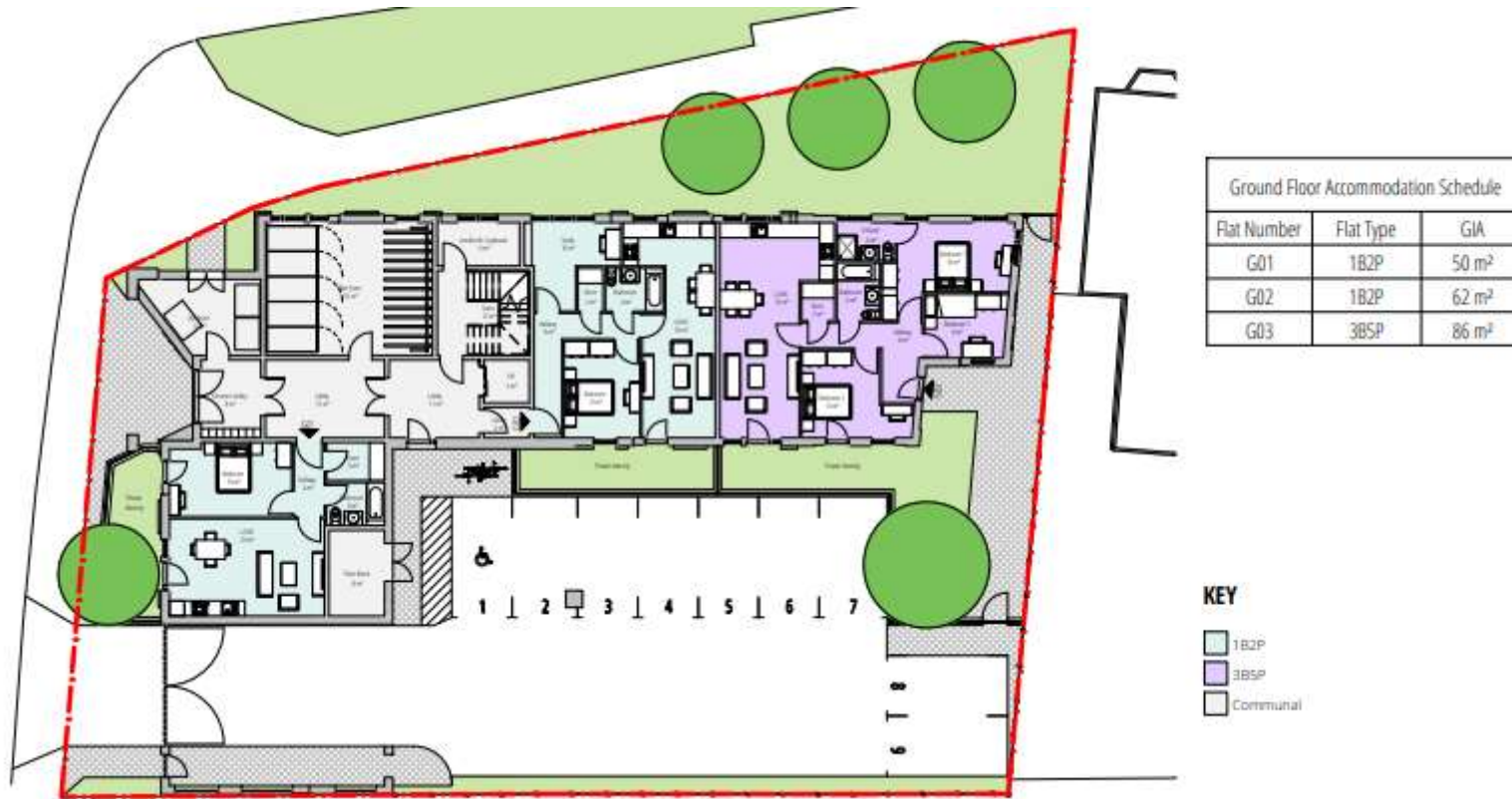
8 - View north across Wellington Street



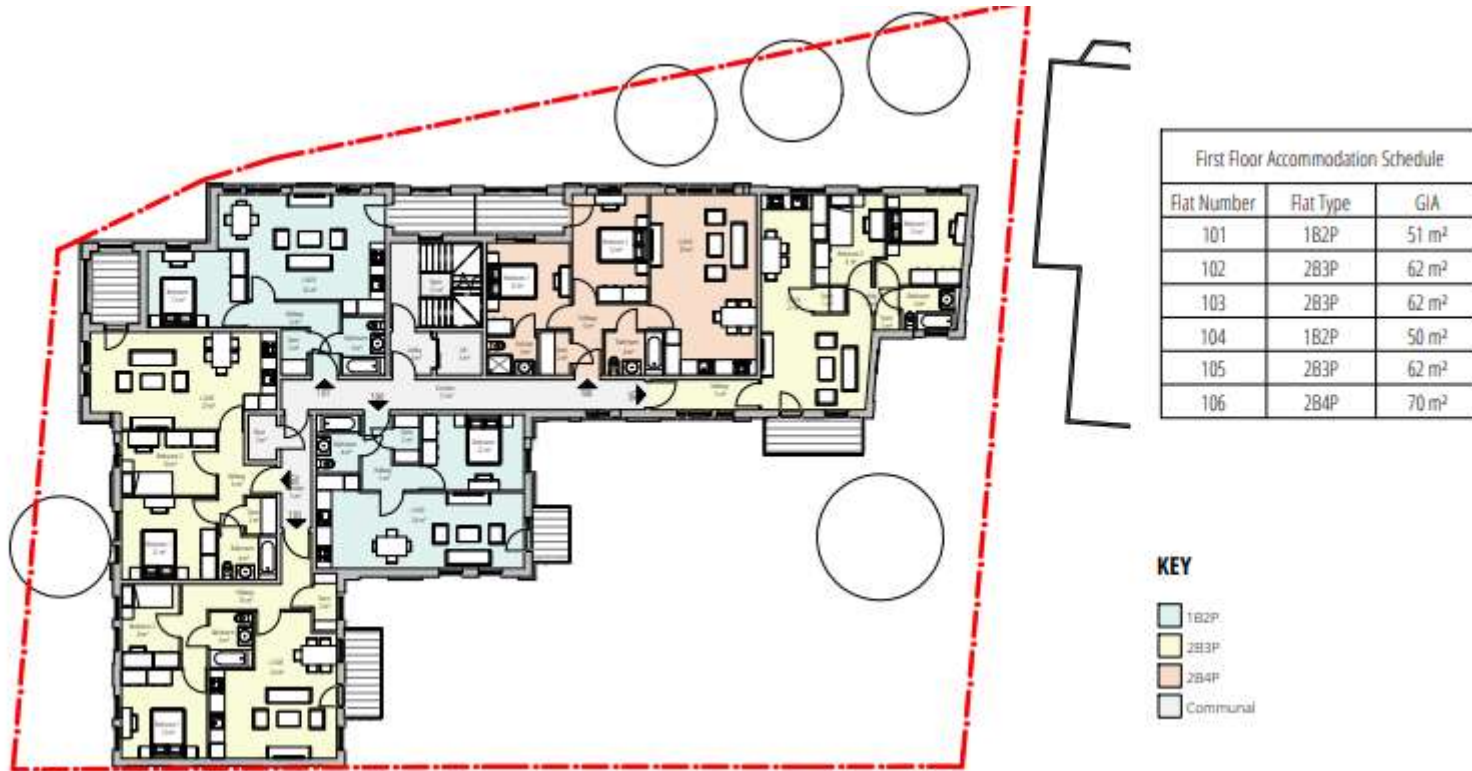
9 - Proposed site layout



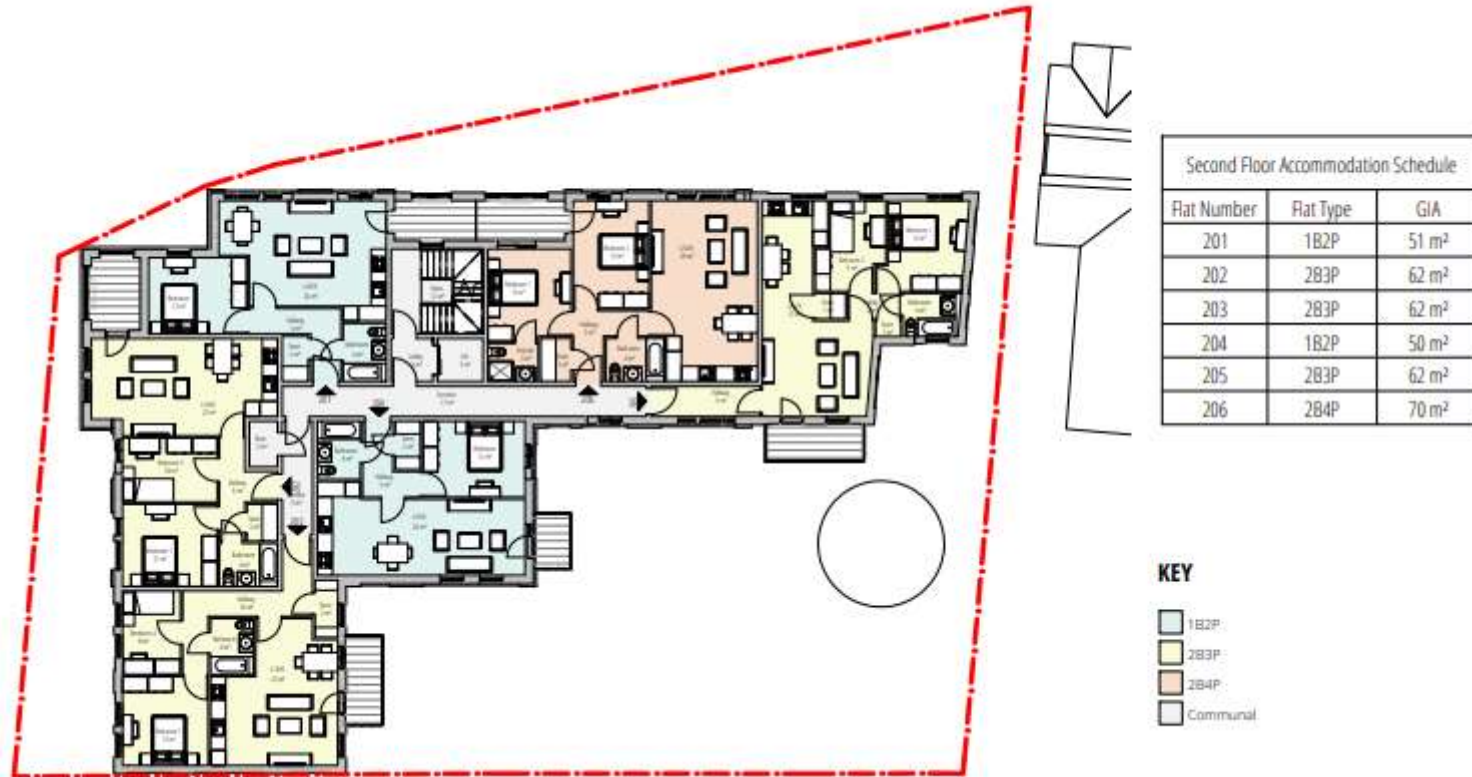
10 – Proposed ground floor layout



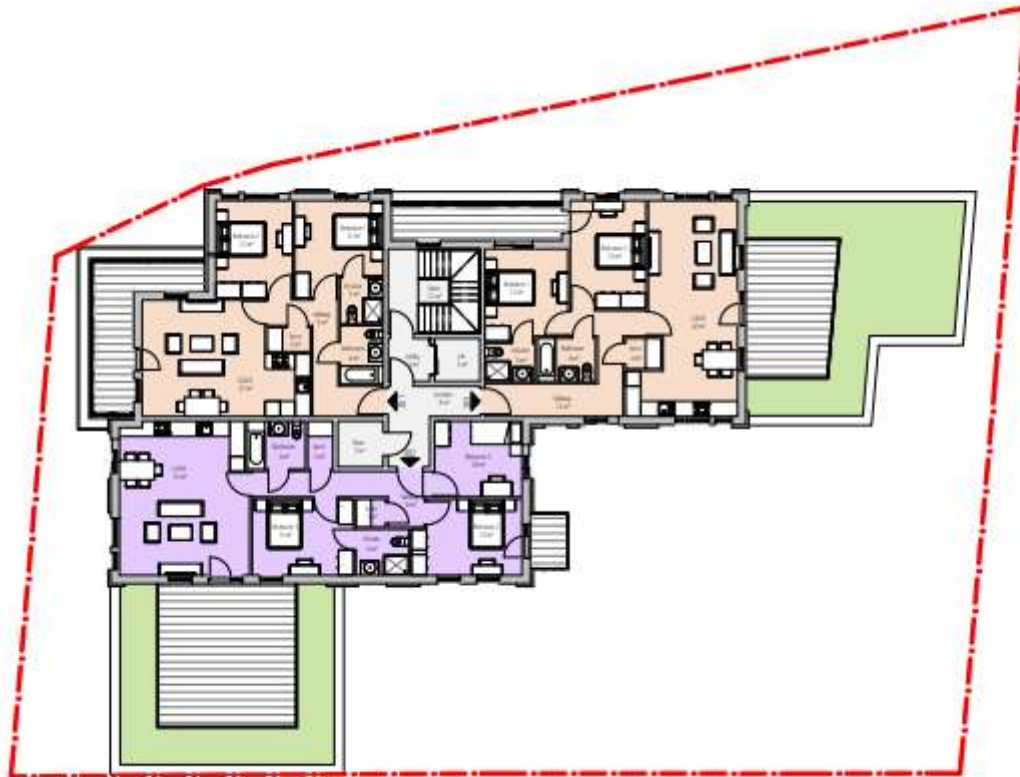
11 – Proposed 1st floor plan



12 – Proposed 2nd floor plan



13 – Proposed 3rd floor plan

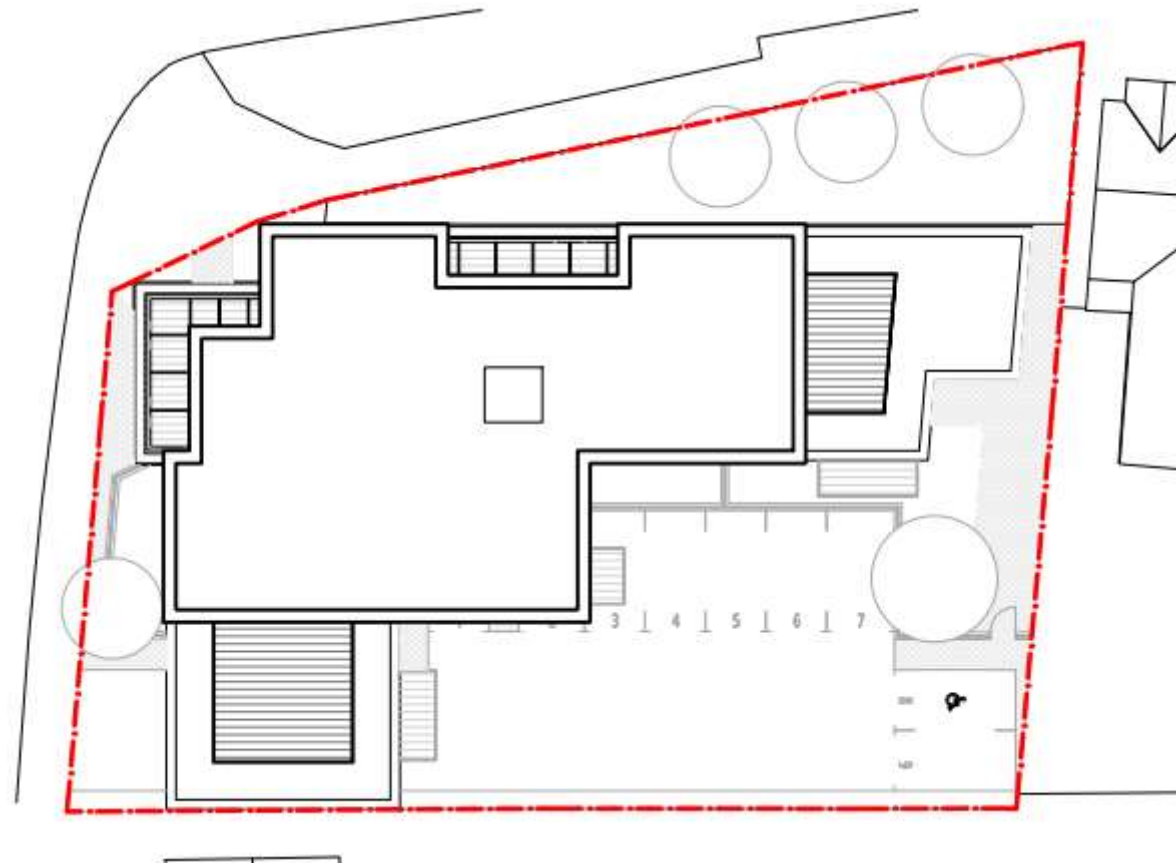


Flat Number	Flat Type	GIA
301	2B4P	70 m ²
302	3B5P	89 m ²
303	2B4P	79 m ²

KEY

- 2B4P
- 3B5P
- Communal

14 – Proposed roof level & poss. tree planting



15 – Proposed street context #1



2 Street Elevation - West (Wexham Road)

16 – Proposed street context #2



1 Street Elevation - North (Wellington Street)

17 - Proposed west side elevation – Wexham Road



18 - Proposed Wellington Street elevation



19 - Proposed east internal/flank elevation



20 – Proposed courtyard/south flank elevation



21 – materials palette



Fig 01: Proposed Brick Finish - Vandersanden Lima or similar



Fig 03: Material Palette Key Plan



Fig 02: Proposed External Door , Window, Railing and Aluminium Cladding Finish - Syntha Pulvin Bronze or similar

This page is intentionally left blank